

# EDT AEOLUS

Anchor Handling, Deep Sea, FiFi 1 - Bollard Pull 103t



Offshore Egypt



TYPE	ANCHOR HANDLING, DEEP SEA & LONG DISTANCE TUG -FIFI 1
OWNER	JONIKEL SHIPPING LIMITED
OPERATOR	EDT OFFSHORE EGYPT S.A.E.
BUILT	2011—DAEWOO MANGALIA HEAVY INDUSTRIES , ROMANIA
FLAG	LIBERIAN
CALL SIGN	5LDL4

SP-CHR-031 EDT Aeolus Specifications Sheet  
Revision 10.0  
Issue Date: 03.10.2024  
Document Owner: Chartering Department

**Uncontrolled when printed or not viewed as the controlled online version.**

### GENERAL INFORMATION

<b>Class</b>	DNV-GL 100 A5 Tug Anchor Handling & Salvage Tug DG MC AUT FF (1)
<b>IMO Number</b>	9476006
<b>Endurance</b>	30 days
<b>Service Speed</b>	13.8 kn

### DIMENSIONS

<b>Gross Tonnage</b>	1.374
<b>Net Tonnage</b>	412
<b>Length Overall</b>	48.88m
<b>Breadth Overall</b>	13.80m
<b>Draft (min/Max)</b>	5.20m / 6.20m
<b>Deck Capacities</b>	Free Deck Space abt. 155 m <sup>2</sup> Deck Load 10 t/ m <sup>2</sup> 15 t/m <sup>2</sup> on cross-beams

### TANK CAPACITIES & DISCHARGE RATES

<b>MGO</b>	583m <sup>3</sup>
<b>Sludge</b>	17m <sup>3</sup>
<b>Fresh Water</b>	180m <sup>3</sup>
<b>Ballast Water</b>	140m <sup>3</sup>

### DECK EQUIPMENT

<b>Winches</b>	2 x Tugger winches 10 tons @ 15 m/min
<b>Hydraulic Crane</b>	1 x Hydraulic Crane 4.5 tons @ 12 m outreach
<b>Container Fittings</b>	2 x Container fittings
<b>Stern Roller</b>	Stern Roller 250 tons SWL (1800 x 3800 mm)
<b>Towing Pins</b>	Karmoy Towing Pins 100 tons SWL
<b>Chain Fork</b>	Chain Fork 100 tons SWL
<b>Electrical Power on Deck</b>	380V / 230V / 50Hz

### TOWING EQUIPMENT

<b>Towing Equipment</b>	1 x Hatlapa AH 1000 Double Drum Towing Winch in Waterfall design electrically driven 100 tons pull @ 15 m/min Main wire 1200 m dia 64 mm Spare wire 950 m dia 64 mm Working wire 125 m 70 mm Grapnel 150 tons SWL, GobEye 100 tons SWL Tug is equipped with all necessary Stretchers, Forerunners, Shackles, Pennant wires, Floating lines, Socket tools and spares
<b>Bollard Pull</b>	103 T

### SALVAGE EQUIPMENT

<b>Salvage Equipment</b>	1 x High Expansion Foam Generator 200m <sup>3</sup> /min@10bars 1 x portable gasoline driven pump, stripping ejectors 1 x portable generator 1 x workboat/Rescue boat & 40 HP Outboard Engine
--------------------------	--

## PROPULSION / MACHINERY

<b>Horsepower</b>	8.160 HP (6.000 kw)
<b>Main Engines</b>	2 x MAN STX 6L32/40 each 3.000 KW @ 750 rpm with Jet-Assist-System 2 x Controllable Pitch Propeller Type Lips dia 3.200 mm each in Kort-Nozzle 2 x Flap Type High Performance Rudders 1 x 400 KW Bowthruster
<b>Auxiliary Engines</b>	2 x Shaft Generators each 640 KW 2 x STX Cummins KTA 19 DM1GA each 370 KW 1 x STX Cummins 6 BT5.9DMGE 80 KW 50 Hz 400 V by Imtech

## FIRE FIGHTING

<b>Fi-Fi 1</b>	2 x Seaplus Co. Monitors each 1200 m <sup>3</sup> /hr @ 12 bar 2 x Fire Fighting Pumps each 1500 m <sup>3</sup> /hr Water Spray System 9600 l/min capacity 15 m <sup>3</sup> Foam Liquid Tank available 1 x High Expansion Foam Generator 200m <sup>3</sup> /min@10bars Vessel carries 100 ltrs of fire fighting Hi-Ex Foam
----------------	--

## NAVIGATION EQUIPMENT

AIS, DGPS Navigator, Gyro Compass, Echo Sounder, Log Speed, Weather Facsimile, Navtex, Joystick Position Control

## ACCOMMODATION

<b>Total Accommodation</b>	20 persons 14 Single Berth Cabins 3 Double Berth Cabins
<b>Other Facilities</b>	1 Hospital Single Berth Fully Airconditioned

## COMMUNICATION

1 x Inmarsat C Terminal  
1 x Telex Terminal  
Inmarsat Fleet Broadband 250 Terminal  
Email, Fax, Telephone System, Data Transfer

T: +357 25 899000

[chartering@edtoffshore.com](mailto:chartering@edtoffshore.com)

*\* While EDT strives to make the information on this document as accurate as possible, it makes no claims, promises, or guarantees about the accuracy, completeness, or adequacy of the contents and expressly disclaims liability for errors and omissions.*

SP-CHR-031 EDT Aeolus Specifications Sheet  
Revision 10.0  
Issue Date: 03.10.2024  
Document Owner: Chartering Department

**Uncontrolled when printed or not viewed as the controlled online version.**

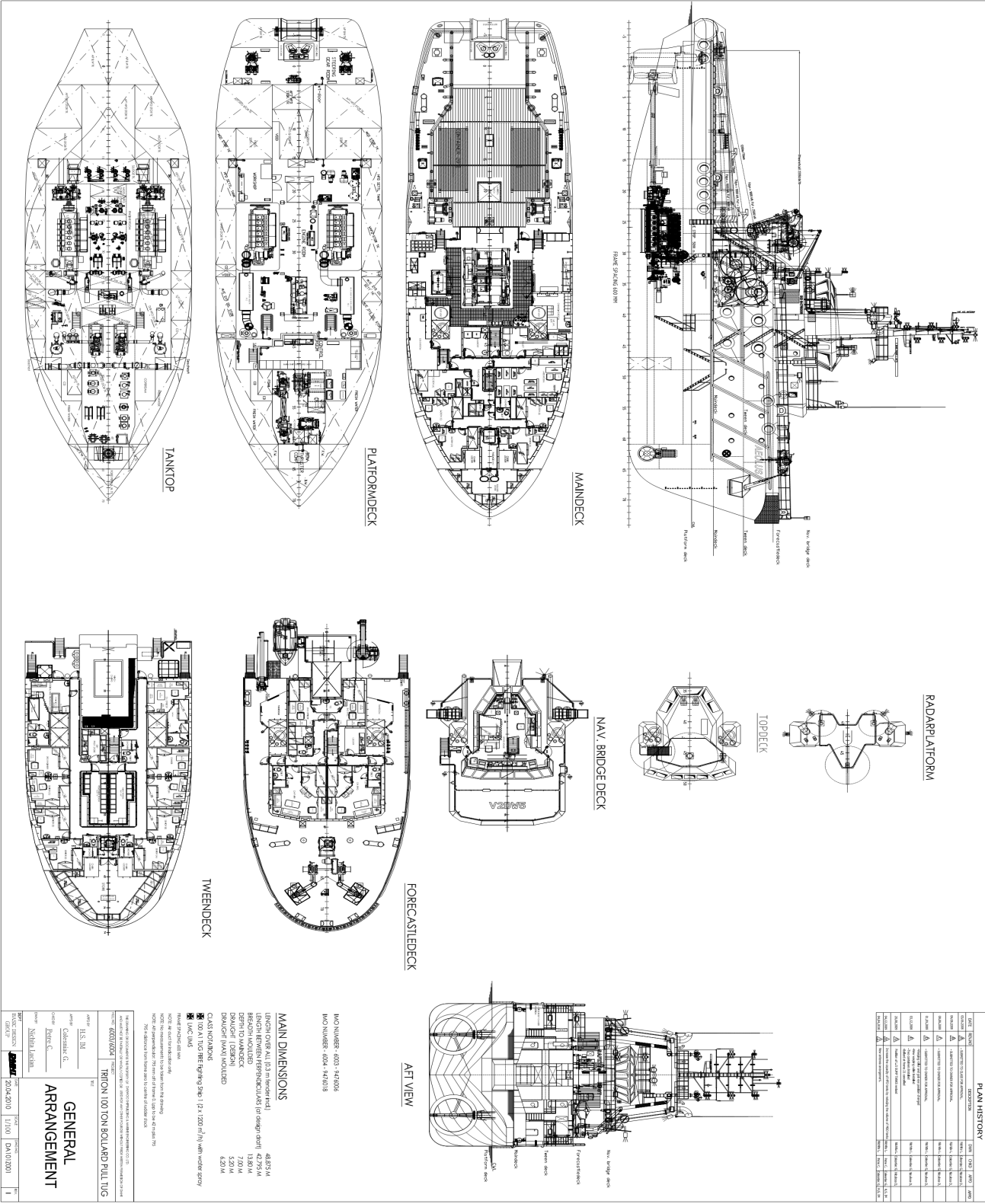


# EDT AEOLUS

## Anchor Handling, Deep Sea, FiFi 1 - Bollard Pull 103t



Offshore Egypt



SP-CHR-031 EDT Aeolus Specifications Sheet  
Revision 10.0  
Issue Date: 03.10.2024  
Document Owner: Chartering Department

Uncontrolled when printed or not viewed as the controlled online version.