

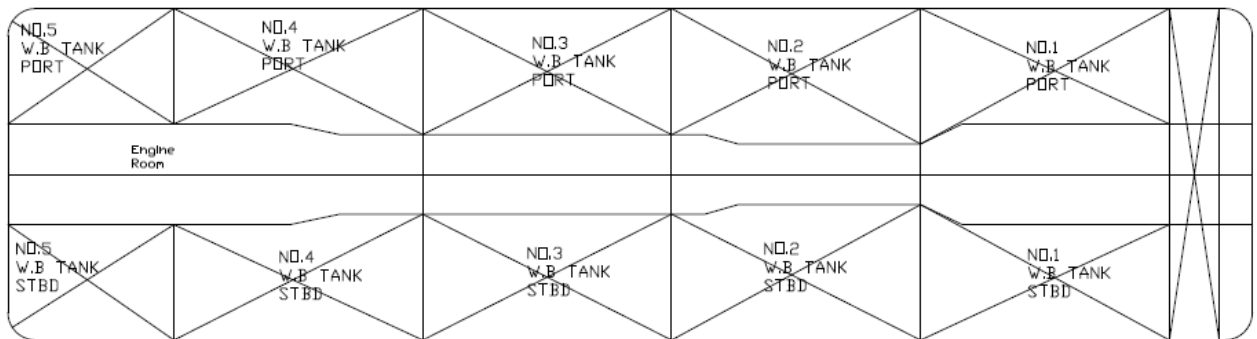
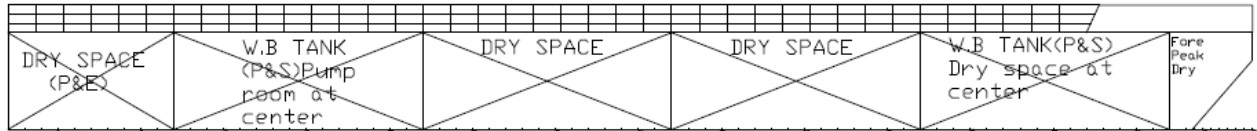


# EDT Niki

Non Propelled Barge



Shipmanagement



**TYPE** NON PROPELLED BARGE

**OWNER** DIRECT SHIPPING COMPANY LTD

**OPERATOR** EDT SHIPMANAGEMENT LTD

**BUILT** 1990, BUAN, BATANGAS—EX PB 201. UPGRADED 2005

**FLAG** CYPRUS

SP-CHR-014 EDT Niki Specifications Sheet  
Revision 4.0  
Issue Date: 07.05.2026  
Document Owner: Chartering Manager

**Uncontrolled when printed or not viewed as the controlled online version.**



# EDT Niki

Non Propelled Barge



Shipmanagement

## GENERAL INFORMATION

IMO Number 711248

Operation Mediterranean Sea

## DIMENSIONS

Gross Tonnage 492

Net Tonnage 148

Length 43.2 m

Breadth 12.00 m

Moulded Depth 3.50 m

## DECK EQUIPMENT

Deck Load 1132 T

Deck Area 500 m<sup>2</sup> (Approx.)

Deck Length 46 m

[chartering@edtoffshore.com](mailto:chartering@edtoffshore.com)

[T: +357 25 899000](tel:+35725899000)

*All vessel particulars, specifications, drawings and related information are provided for general reference only and are based on information available at the time of issuance. While reasonable care has been taken, Owners/Managers make no representations or warranties, express or implied, as to the accuracy, completeness or current validity of such information, and expressly disclaim liability for any errors or omissions. The information does not constitute a guarantee of the vessel's present condition or performance. Any reliance is at the Charterer's sole risk, and Charterers are responsible for verifying all particulars prior to fixture.*

SP-CHR-014 EDT Niki Specifications Sheet  
Revision 4.0  
Issue Date: 07.05.2026  
Document Owner: Chartering Manager

**Uncontrolled when printed or not viewed as the controlled online version.**