

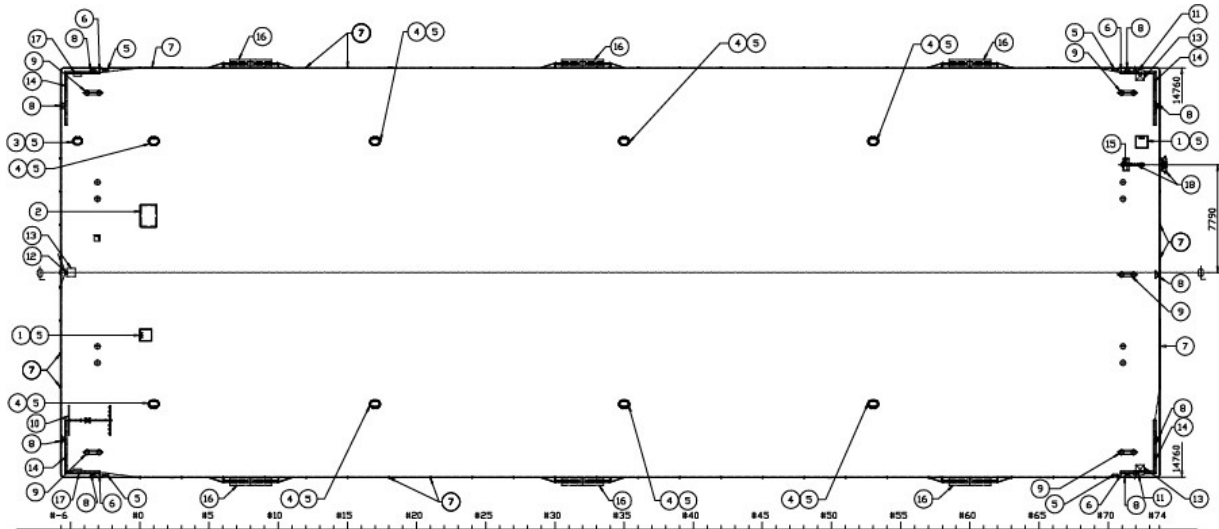


# EDT Susan II

100 A5 E Pontoon



Shipmanagement



|                 |                        |
|-----------------|------------------------|
| <b>TYPE</b>     | 100 A5 E PONTOON       |
| <b>OPERATOR</b> | EDT SHIPMANAGEMENT LTD |
| <b>BUILT</b>    | 2007                   |
| <b>FLAG</b>     | CYPRUS                 |
| <b>OFF. NO</b>  | DHD02                  |

SP-CHR-028 EDT Susan II Specifications Sheet  
Revision 6.0  
Issue Date: 07.05.2026  
Document Owner: Chartering Manager

**Uncontrolled when printed or not viewed as the controlled online version.**



# EDT Susan II

100 A5 E Pontoon



Shipmanagement

## GENERAL INFORMATION

Classification GL + 100 A5 Pontoon E

Official Number DHDO2

Operation Worldwide

## DIMENSIONS

Gross Tonnage 3045 mt

Net Tonnage 913 mt

Deadweight 5.250

Length Overall 79.40 m

Breadth Moulded 29.52 m

Depth to Main Deck 4.80 m

Draft Light / Max 0.705m / 3.00m

## TANK CAPACITIES

Ballast Water Capacity 6,295.2 m<sup>3</sup>

Pump Capacity 1080 m<sup>3</sup>/hr

## DECK EQUIPMENT

Deckload 10 t/m<sup>2</sup> (max 250t) (single load 250t)

Deck Area 2345 m<sup>2</sup> approx.

Deck Length 79.4 m

Bollards 6

## BALLAST SYSTEM

Ballast Pumps 3 x 360 m<sup>3</sup>/hr

Ballast Tanks 8 tanks (4 each side)

Manholes 1 in each tank flush with deck

[chartering@edtoffshore.com](mailto:chartering@edtoffshore.com)

[T: +357 25 899000](tel:+35725899000)

All vessel particulars, specifications, drawings and related information are provided for general reference only and are based on information available at the time of issuance. While reasonable care has been taken, Owners/Managers make no representations or warranties, express or implied, as to the accuracy, completeness or current validity of such information, and expressly disclaim liability for any errors or omissions. The information does not constitute a guarantee of the vessel's present condition or performance. Any reliance is at the Charterer's sole risk, and Charterers are responsible for verifying all particulars prior to fixture.

SP-CHR-028 EDT Susan II Specifications Sheet  
Revision 6.0  
Issue Date: 07.05.2026  
Document Owner: Chartering Manager

**Uncontrolled when printed or not viewed as the controlled online version.**